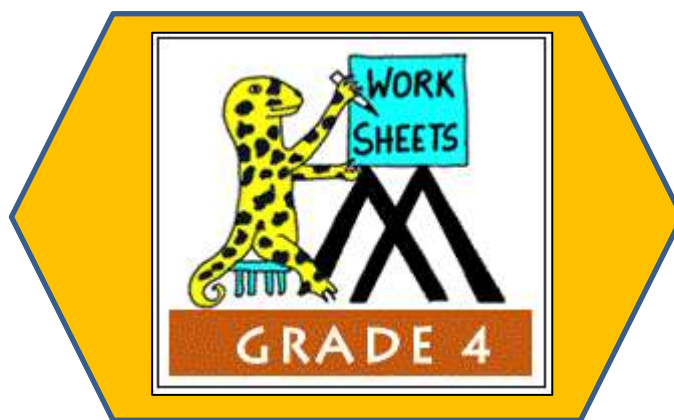


# MATH SALAMANDERS

## GRADE 4 MATHS GRAB PACK 1

This pack is a selection of 10 Maths sheets adapted for Grade 4 pupils.

All the worksheets are also available on our site.



In the pack is a range of number sheets, colouring pages, and puzzles.

There is also an answer pack which you can download separately.

CONTENTS			
1	5 Digit Addition	6	3 Digit Money Subtraction 2
2	Make 100	7	Reading and Writing BIG Numbers
3	Easter Codebreaker 2B	8	Easter Egg Colour In 2
4	Number Fill In Puzzle 2	9	Arithmogon Triangle Puzzle 4A
5	Easter Colour By Number Addition to 20	10	Mental Math Quiz 4:1

Please give us feedback on our pack – both what you liked and what sheets you would like to see more of by leaving a comment on the link below.

<https://www.math-salamanders.com/maths-grab-packs.html>



Free Math Sheets, Math Games and Math Help

**MATH-SALAMANDERS.COM**

## COLUMN ADDITION 5 DIGITS SHEET 1

$$\begin{array}{r} 1) \quad 4 \ 2 \ 1 \ 5 \ 3 \\ + \ 5 \ 0 \ 2 \ 4 \ 7 \\ \hline \end{array}$$

$$\begin{array}{r} 2) \quad 2 \ 6 \ 1 \ 4 \ 8 \\ + \ 6 \ 2 \ 7 \ 8 \ 5 \\ \hline \end{array}$$

$$\begin{array}{r} 3) \quad 7 \ 0 \ 2 \ 1 \ 3 \\ + \ 1 \ 4 \ 2 \ 7 \ 8 \\ \hline \end{array}$$

$$\begin{array}{r} 4) \quad 7 \ 2 \ 1 \ 5 \ 6 \\ + \ 5 \ 6 \ 2 \ 5 \ 7 \\ \hline \end{array}$$

$$\begin{array}{r} 5) \quad 2 \ 1 \ 4 \ 2 \ 4 \\ + \ 6 \ 0 \ 3 \ 1 \ 6 \\ \hline \end{array}$$

$$\begin{array}{r} 6) \quad 3 \ 0 \ 8 \ 5 \ 2 \\ + \ 8 \ 5 \ 1 \ 3 \ 9 \\ \hline \end{array}$$

$$\begin{array}{r} 7) \quad 8 \ 9 \ 0 \ 1 \ 5 \\ + \ 4 \ 6 \ 2 \ 7 \\ \hline \end{array}$$

$$\begin{array}{r} 8) \quad 5 \ 2 \ 6 \ 7 \ 1 \\ + \ 1 \ 4 \ 7 \ 6 \ 7 \\ \hline \end{array}$$

$$\begin{array}{r} 9) \quad 7 \ 8 \ 5 \ 4 \ 5 \\ + \ 3 \ 0 \ 2 \ 1 \ 6 \\ \hline \end{array}$$

$$\begin{array}{r} 10) \quad 2 \ 1 \ 4 \ 5 \ 2 \\ + \ 1 \ 3 \ 2 \ 5 \ 5 \\ + \ 4 \ 2 \ 6 \ 1 \\ \hline \end{array}$$

$$\begin{array}{r} 11) \quad 6 \ 7 \ 0 \ 1 \ 4 \\ + \ 3 \ 0 \ 5 \ 2 \ 6 \\ + \ 1 \ 1 \ 6 \ 7 \ 5 \\ \hline \end{array}$$

$$\begin{array}{r} 12) \quad 5 \ 8 \ 1 \ 2 \ 5 \\ + \ 2 \ 6 \ 7 \ 5 \ 2 \\ + \ 5 \ 7 \ 8 \ 4 \\ \hline \end{array}$$

$$\begin{array}{r} 13) \quad 4 \ 6 \ 2 \ 1 \ 3 \\ + \ 2 \ 4 \ 7 \ 7 \\ + \ 1 \ 0 \ 4 \ 9 \ 2 \\ \hline \end{array}$$

$$\begin{array}{r} 14) \quad 1 \ 8 \ 9 \ 2 \ 5 \\ + \ 3 \ 2 \ 1 \ 4 \ 7 \\ + \ 7 \ 6 \ 8 \ 0 \\ \hline \end{array}$$

$$\begin{array}{r} 15) \quad 3 \ 2 \ 7 \ 6 \ 8 \\ + \ 4 \ 6 \ 2 \ 8 \\ + \ 1 \ 5 \ 2 \ 7 \ 3 \\ \hline \end{array}$$

# MAKE 100

Use the numbers in the grid each time.

27	45	63	51	84
26	18	74	22	49
55	67	16	82	33

## **Challenge 1**

Find pairs of numbers that add up to 100.

Try to find 6 different pairs.

## **Challenge 2**

Try to find sets of 3 numbers that add up to make 100.

Try to find 3 different answers.

# EASTER CODEBREAKER 2B

## MULTIPLICATION FACTS TO 10X10

Use the clues to work out the answer to the Easter joke.

A	B	C	D	E	F	H	I	L	M	N	O	R	S	T	U	Y	!
12	30	49	42	24	48	56	20	40	64	36	64	81	18	28	8	32	14

Did you hear what happened to the rabbits  
who went too near the bath?

Letter	T																
Number	28																
Fact	4x7	7x8	6x4	8x4				6x8	4x6	10x4	8x5						

Letter																	
Number																	
Fact	5x4	4x9		4x3	9x4	6x7			5x6	3x8	7x7	6x2					

Letter																	
Number																	
Fact	8x8	4x6		8x7	8x8	7x4			7x7	9x9	8x8	3x6					

Letter																	
Number																	
Fact	9x2		10x3	2x4	4x9	6x6	4x5	8x3	2x9	7x2							



## NUMBER FILL IN PUZZLE 2

Work out which of the numbers goes in each space in the puzzle below.  
One of the numbers has been done for you.

3											
2											
4											
1											
7											
9											
							2	3	7	8	1

3 DIGITS	4 DIGITS		5 DIGITS		6 DIGITS
143	2018	6271	15972	52876	<del>324179</del>
265	2934	7065	23781	53462	971302
368	3165	7931	27054	64217	
451	3648	8023	31648	86015	
527	4382	9426	32142	93205	
584	4629	9487			
702					

## EASTER COLOUR BY NUMBER: CHICK ADDITION TO 20

10+8	5+13	1+19	6+14	7+11	6+6	7+5	7+8	2+12	4+9	8+10	14+6	7+12	10+9	6+12	9+9
17+2	2+17	6+13	7+11	3+2	10+2	10+6	2+13	8+8	1+14	1+11	7+7	8+11	16+2	14+4	6+12
10+8	5+13	9+9	5+7	9+4	16+0	4+12	8+7	6+9	3+13	7+9	5+15	16+3	18+2	11+8	3+17
5+14	16+3	7+11	9+10	4+12	6+10	13+3	11+4	9+8	10+7	3+13	8+8	6+14	8+10	7+12	18+2
16+2	14+5	10+8	17+3	13+2	5+10	9+7	4+13	8+9	6+10	13+4	10+7	5+13	3+15	18+0	15+3
4+14	7+12	10+9	4+14	3+14	8+10	15+1	8+7	10+5	9+8	6+14	16+1	17+1	13+5	6+14	18+1
3+16	5+14	3+9	17+3	3+12	4+11	7+10	5+4	1+10	6+10	8+8	11+6	5+15	5+8	1+2	13+6
12+8	6+6	4+0	6+9	11+6	0+16	6+4	1+8	6+5	3+8	5+12	8+7	4+12	13+2	3+15	16+4
10+9	9+7	2+14	15+2	7+10	6+9	12+3	7+3	10+0	17+0	5+10	6+11	4+11	2+0	10+5	6+8
13+3	10+6	9+8	4+8	1+3	4+11	13+2	10+7	4+12	16+0	3+14	1+1	10+2	6+7	8+7	4+11
11+7	8+8	3+3	2+6	11+2	0+0	2+14	5+10	3+10	8+7	5+7	7+6	7+0	3+5	4+4	6+13
15+4	2+10	4+9	8+6	1+7	5+2	1+11	1+15	3+10	7+7	1+5	3+4	5+9	2+12	2+2	20+0
3+17	4+6	9+2	4+7	14+0	4+8	5+1	4+4	2+5	5+7	6+8	7+5	4+5	10+1	3+8	2+17
7+12	2+3	9+3	5+6	7+2	1+8	4+8	10+4	7+6	6+4	2+9	7+4	3+11	10+0	10+2	16+4
15+5	0+2	8+5	11+3	3+6	2+10	5+6	1+10	8+2	13+0	3+7	5+9	7+7	3+10	3+1	8+10
11+7	6+13	7+1	0+6	3+3	8+5	9+3	7+2	2+10	12+1	3+10	2+5	0+8	4+4	17+3	5+13
8+11	4+16	7+7	2+10	3+4	5+1	3+3	5+8	9+4	0+6	4+3	1+7	4+10	7+13	15+5	18+1
1+13	14+4	3+16	0+1	12+2	5+9	4+8	6+2	1+7	7+7	3+11	1+13	1+0	6+12	15+3	0+4
6+6	0+0	18+2	1+19	2+2	1+4	4+10	9+5	7+7	2+1	1+3	4+0	7+13	15+3	7+5	9+3
8+5	3+10	7+6	2+16	10+9	12+2	2+0	1+2	3+1	2+3	3+9	9+11	4+15	7+7	5+0	10+4

KEY		
0 to 5 white	6 to 8 green	9 to 11 red
12 to 14 blue	15 to 17 yellow	18 to 20 black



## COLUMN SUBTRACTION MONEY 3-DIGITS SHEET 2

$$\begin{array}{r} 1) \quad \$4.65 \\ - \$1.83 \\ \hline \$ \quad . \end{array}$$

$$\begin{array}{r} 2) \quad \$7.29 \\ - \$3.54 \\ \hline \$ \quad . \end{array}$$

$$\begin{array}{r} 3) \quad \$9.68 \\ - \$3.43 \\ \hline \$ \quad . \end{array}$$

$$\begin{array}{r} 4) \quad \$7.07 \\ - \$2.62 \\ \hline \$ \quad . \end{array}$$

$$\begin{array}{r} 5) \quad \$6.89 \\ - \$4.55 \\ \hline \$ \quad . \end{array}$$

$$\begin{array}{r} 6) \quad \$7.47 \\ - \$4.52 \\ \hline \$ \quad . \end{array}$$

$$\begin{array}{r} 7) \quad \$9.90 \\ - \$6.57 \\ \hline \$ \quad . \end{array}$$

$$\begin{array}{r} 8) \quad \$8.29 \\ - \$1.65 \\ \hline \$ \quad . \end{array}$$

$$\begin{array}{r} 9) \quad \$5.21 \\ - \$1.75 \\ \hline \$ \quad . \end{array}$$

$$\begin{array}{r} 10) \quad \$6.32 \\ - \$3.58 \\ \hline \$ \quad . \end{array}$$

$$\begin{array}{r} 11) \quad \$7.04 \\ - \$5.87 \\ \hline \$ \quad . \end{array}$$

$$\begin{array}{r} 12) \quad \$4.45 \\ - \$1.99 \\ \hline \$ \quad . \end{array}$$

$$\begin{array}{r} 13) \quad \$7.65 \\ - \$5.45 \\ \hline \$ \quad . \end{array}$$

$$\begin{array}{r} 14) \quad \$8.23 \\ - \$4.87 \\ \hline \$ \quad . \end{array}$$

$$\begin{array}{r} 15) \quad \$5.00 \\ - \$1.85 \\ \hline \$ \quad . \end{array}$$

$$\begin{array}{r} 16) \quad \$6.24 \\ - \$3.65 \\ \hline \$ \quad . \end{array}$$

$$\begin{array}{r} 17) \quad \$8.47 \\ - \$6.65 \\ \hline \$ \quad . \end{array}$$

$$\begin{array}{r} 18) \quad \$6.31 \\ - \$3.84 \\ \hline \$ \quad . \end{array}$$

$$\begin{array}{r} 19) \quad \$9.00 \\ - \$6.38 \\ \hline \$ \quad . \end{array}$$

$$\begin{array}{r} 20) \quad \$5.16 \\ - \$3.59 \\ \hline \$ \quad . \end{array}$$

$$\begin{array}{r} 21) \quad \$6.12 \\ - \$4.25 \\ \hline \$ \quad . \end{array}$$

$$\begin{array}{r} 22) \quad \$7.67 \\ - \$5.34 \\ \hline \$ \quad . \end{array}$$

$$\begin{array}{r} 23) \quad \$8.14 \\ - \$2.68 \\ \hline \$ \quad . \end{array}$$

$$\begin{array}{r} 24) \quad \$5.20 \\ - \$3.26 \\ \hline \$ \quad . \end{array}$$



## READING AND WRITING BIG NUMBERS CHALLENGE 1

Write the correct value of each number next to each number written in words.

Now put the numbers in the correct place in the number puzzle.

There are some clues in the number puzzle to help you know where each number goes.

Put the numbers in order, from biggest to smallest.

**Twenty-four thousand, and thirty-six** \_\_\_\_\_

**One hundred ninety-four thousand, five hundred and eight** \_\_\_\_\_

**Six million, one hundred and three thousand, two hundred and forty-nine**  
\_\_\_\_\_

**Fifty thousand, eight hundred and ninety-four** \_\_\_\_\_

~~Three hundred twenty-nine thousand, one hundred one~~    **329,101**

**Nine hundred twenty thousand and forty-five** \_\_\_\_\_

**Seven hundred five thousand, two hundred and forty-eight** \_\_\_\_\_

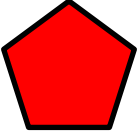
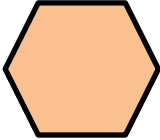
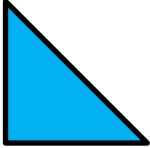

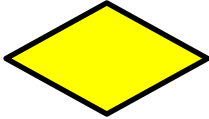
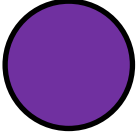
3	2	9	1	0	1		
5						1	
			2				
							9
		0			4		

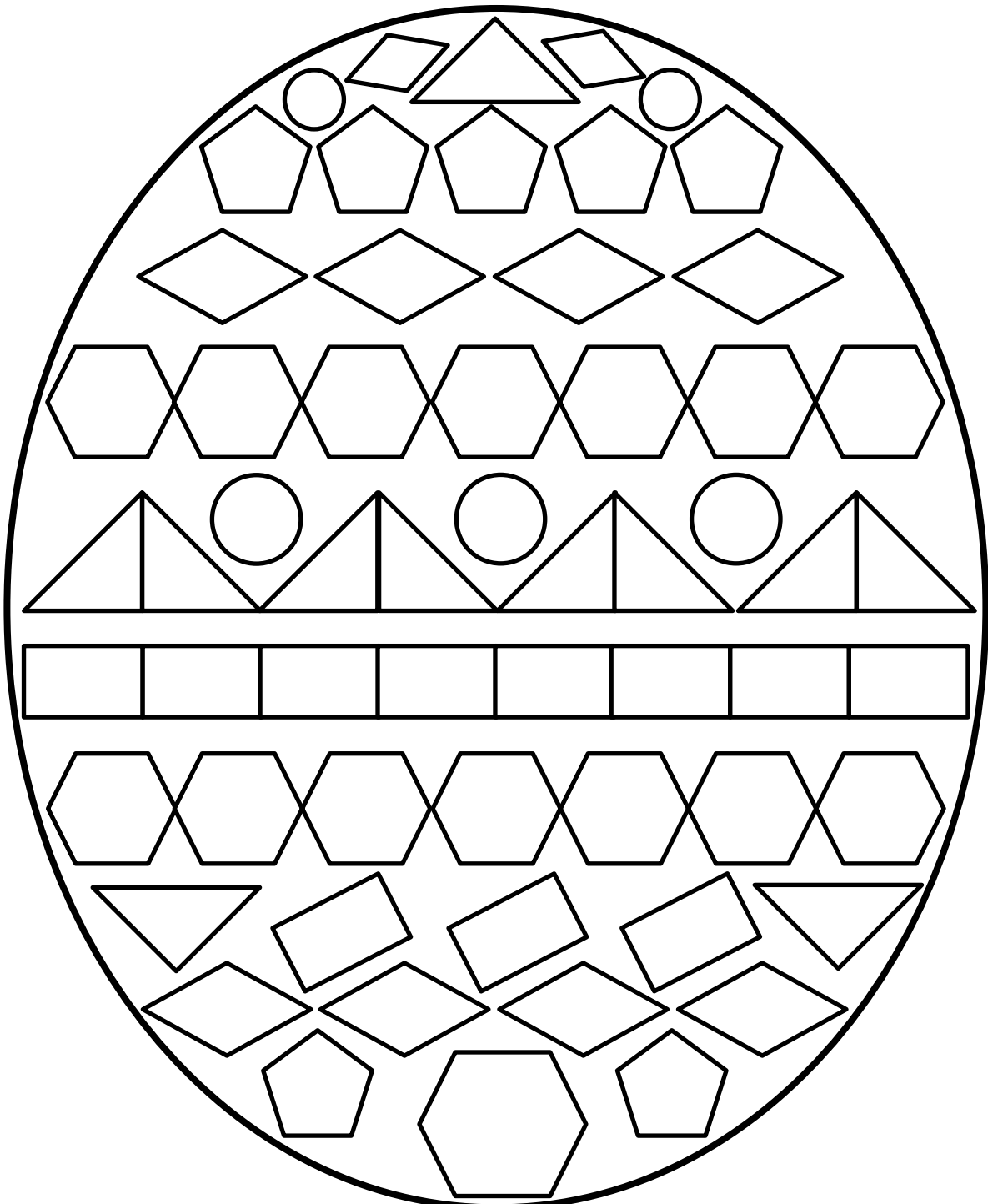
ORDERING	
biggest	6,103,249
smallest	





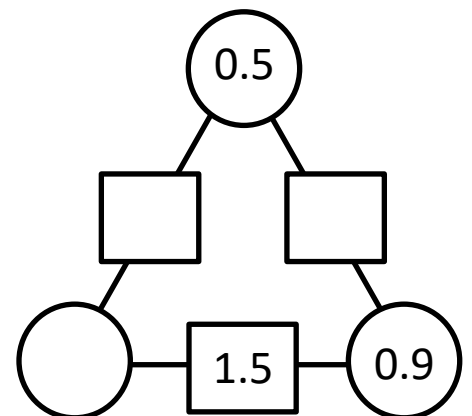
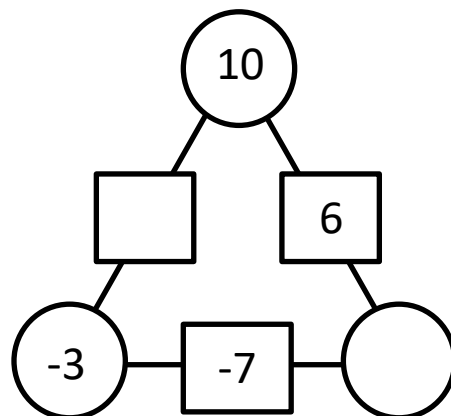
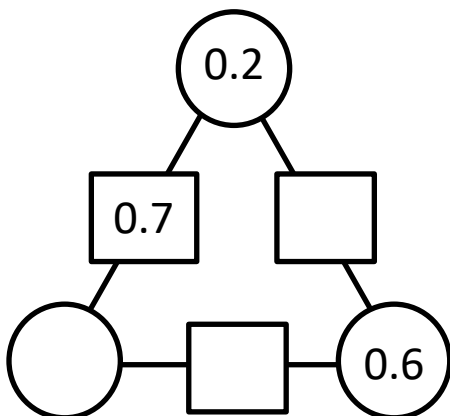
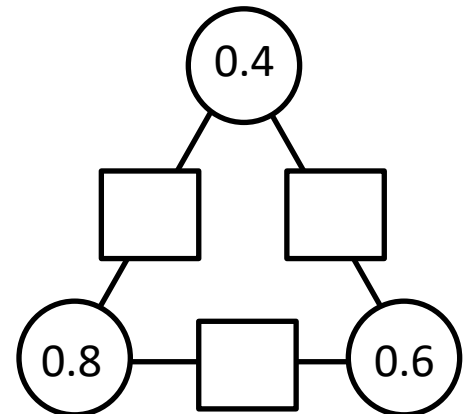
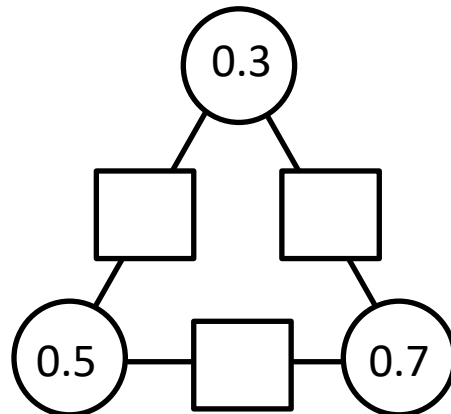
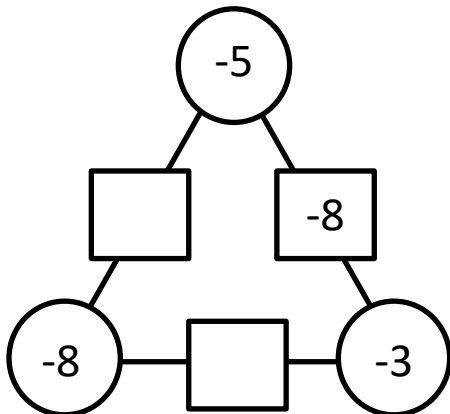
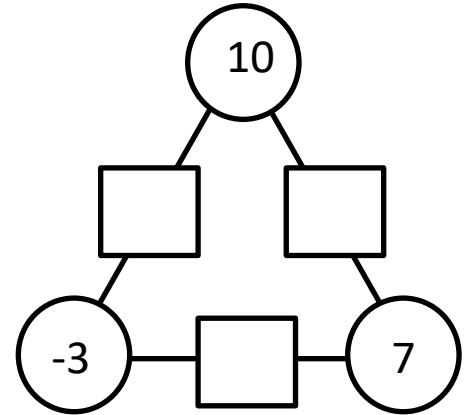
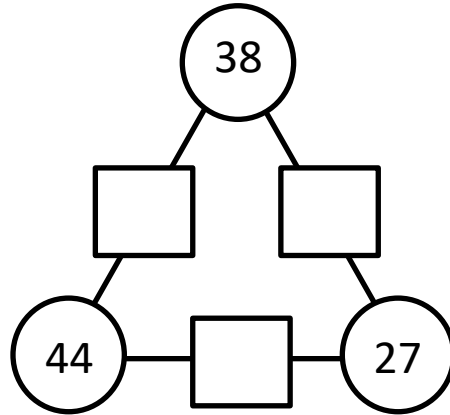
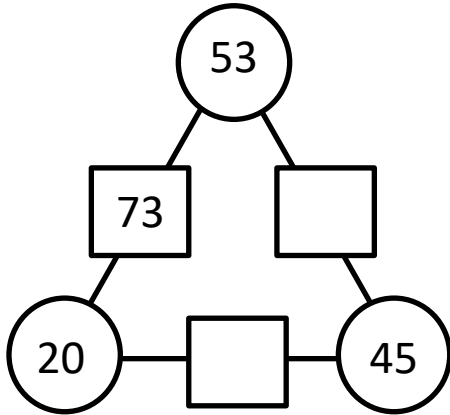
# EASTER EGG SHAPE COLOUR IN 2

Red	Pink	Blue	Green	Yellow	Purple
					

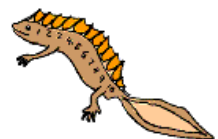


## ARITHMOGON TRIANGLE PUZZLE 4A


The numbers in the circles added together makes the number in the linking rectangle. Find the missing numbers in this puzzle.



Remember to check your answers carefully.



# MENTAL MATHS QUIZ 4:1

1)	Work out $0.7 + 0.8$	
2)	Write the Roman numerals XXXVII in figures.	
3)	Which of these fractions is equivalent to a half? $\frac{1}{3}$ $\frac{2}{5}$ $\frac{3}{6}$ $\frac{4}{9}$ $\frac{5}{8}$	
4)	$42 \div 6$	
5)	Write down the number eighteen thousand and twenty-seven	
6)	Fill in the missing number $4081 = 4001 + \underline{\quad}$	
7)	Write down two numbers with a sum of 9 and a difference of 1.	
8)	How many vertices in a triangular pyramid? 	
9)	Write all down the factors of 15.  _____	
10)	Add together $6\frac{1}{2}$ , 5 and $3\frac{1}{2}$	
11)	I have \$10. I spend \$2.70. How much do I have left?	
12)	What is the value of $x + 7$ when $x = 3$ ?	
13)	What is $\frac{1}{3}$ of 21?	
14)	A plane journey takes $6\frac{1}{2}$ hours. If I set off at 8:40am, what time will I arrive?	<b>pm</b>
15)	A pen costs \$4.60. How much will 2 pens cost?	
16)	A piece of rope measuring 4m is cut into 8 equal lengths. How long will each piece be?	